

INSTRUCTION MANUAL

WE MAKE TOYS FOR YOUR TOYS.™

INSTRUCTIONS

Thank you for purchasing your FunAir® Inflatable! With proper care and maintenance, it should provide you with years of great fun and excitement. Please read this Set Up and Operating Manual completely prior to attempting to set up your inflatable.

After you have read this entire manual, please feel free to contact our customer service team with any additional questions you may have about the operation of this inflatable.

This product comes with a 3-year limited warranty, and you can find information at [http:// www.funair.com/pages/no-fun-page](http://www.funair.com/pages/no-fun-page)

INFLATION

Your FunAir® Inflatable has 1 inflation valve on the body. The body portion will also have 1 pressure relief valve (PRV) that actuates at 1.75 psi.

When inflating your Inflatable, be sure that someone is manning the air pump at all times to prevent over inflation. The product should be inflated to 1.75 psi and allowed to balance back to the point that the PRV will not release air.

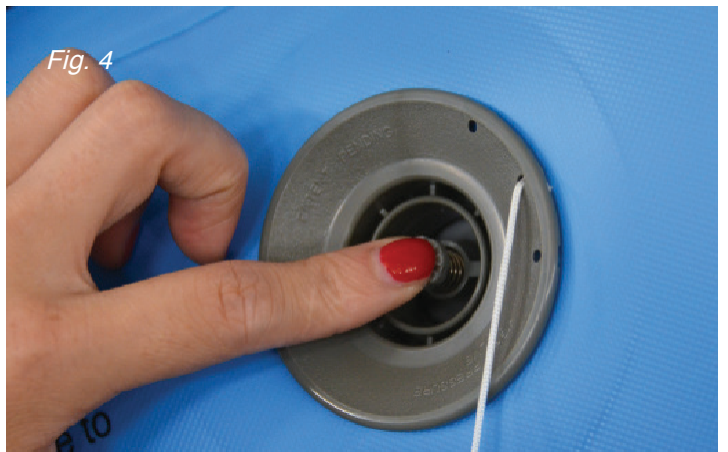
A properly inflated Inflatable component will feel very solid and firm to the touch and will register a 1.75 psi on the FunAir® Inflation Gauge included with your product. You should be able to slap it and hear a pinging sound. If you cannot locate your gauge, then you can fill up the product with air until the PRV starts to release air to prevent the popping or damaging of the internals of the product. Please note the PRV WILL NOT RELEASE air fast enough to prevent damage to the unit if someone is not paying attention to the air pump. This methodology of inflating your product works fine as long as you have a properly functioning PRV valve; therefore, play close attention using this method of inflation.

If in doubt, stop filling the Inflatable and see if the PRV has started to release air. If the PRV is not releasing air, then continue to inflate the island and monitor the PRV. If you find that the PRV is releasing air, stop inflating immediately, and allow the air to release. Once the pressure in the inflatable reaches the preset psi of the PRV, the valve will stop releasing air.

AIR PUMP

Our standard FunAir® pump is 230v / 50 cycles with a European plug or a 110v / 60 cycles with an American plug. The pump has an inflation and deflation port.

Please connect the air hose to the proper port before turning the air pump on. The proper attachment to insert onto the hose and into the inflation valve is shown in (FIG. 2) & (FIG. 3).



During inflation, ensure the air valve is in the closed position by pushing on the stem to see it if depresses about 1/4 inch (FIG. 4). If it does not depress 1/4 of an inch, then rotate the stem 1/4 turn left, and it should pop out to a shut position. The valve is now closed. If the valve is open during inflation, then it will release air from the tube when the pump is removed.

During deflation, ensure valve is in open position so air will come out and product will deflate

WARNING LABEL

Here is a copy of the warning label that you will find on your FunAir® product. Please read the label and follow the instructions.

AWARNING

To prevent **SERIOUS INJURY** or **DEATH**:
NOT FOR CHILDREN UNDER 5 YEARS OF AGE

BEFORE USE:

- DO NOT use air compressor to inflate FunAir® products.
- ALWAYS inspect for holes, tears, or other damage. If damaged, DO NOT use.
- Check and maintain correct air pressure as indicated adjacent to the inflation valve(s) or in the Owner's Manual prior to and during use.
- Proper set up by an adult is required.
- Remove all sharp objects from your person before use.
- ALWAYS be careful on product because slippery when wet.
- DO NOT use unless competent swimmer.

DURING USE:

- ALWAYS wear a U.S. Coast Guard approved Type III (PDF) vest.
- No shoes are allowed on the inflatable.
- ONLY use with mature, knowledgeable adult supervision.
- DO NOT dive, somersault, or engage in rough play.
- DO NOT use inflatable if winds exceed 15 MPH (25 KPH).
- ALWAYS seek shelter immediately in bad weather.
- DO NOT use while under the influence of alcohol or drugs or while you have any impaired mental capacity.

FunAir.com +1 512.270.4900 Austin, TX 78704 **MADE IN CHINA**
©2016 All Rights Reserved



OPERATION RULES

- ① Inspect product for holes, tears or other damage prior to use. If damaged, DO NOT use.
- ② Inspect area for submerged rocks and other potential hazards. If found, DO NOT use that location.
- ③ FunAir® product should be a minimum of 10ft (3M) away from any obstructions including: rocks, trees, boats, sticks or other sharp objects.
- ④ DO NOT use if winds are over 15mph (25kph).
- ⑤ Not for use by children under 5 years of age. Not for use by anyone weighing over 200lbs (90 kilograms).
- ⑥ Do not use if pregnant, consuming alcohol or taking medication.
- ⑦ Always wear a personal flotation device. US Coast Guard Type III recommended.
- ⑧ DO NOT allow others to swim near or under the product. Spectators should be a Minimum of 10ft (3M) away from the product.
- ⑨ Never dive head first into the water from a product.

ANCHOR RING - DIRECTION OF PULL

Some FunAir® products include D Rings for anchoring the product. Always try to connect the rings and pull the product in a direction that is a shearing direction and not a peeling direction.

(FIG. 1) below shows the proper direction of pull

(FIG. 2) shows a peeling direction of pull which should always be avoided.



QUALITY ASSURANCE PROCESS

All products are fully inflated and tested at the factory prior to shipment. Our tests include pressure tests to ensure no leakage, actual measurements against design measurements, and last minute fit and finish details.



MAINTENANCE

MAINTENANCE IS ESSENTIAL TO INCREASE THE LIFE OF YOUR PRODUCT. PLEASE FOLLOW ALL MAINTENANCE AND REPAIRS ACCORDING TO THE MANUAL.

- Inspect product regularly for potentially unsafe conditions, particularly after storms.
- Do not use product if repair is needed! Repair first and let repair cure for at least 24 hours before using again.
- Clean product regularly as instructed in the cleaning section of this manual found below.
- Ensure storage area is dry and rodent free.
- ALWAYS REMOVE INFLATABLE FROM THE WATER WHEN NOT IN USE.
- KEEP INFLATABLE OUT OF SUNLIGHT WHEN NOT IN USE TO EXTEND THE LIFE OF YOUR INFLATABLE.
- FUNAIR® RECOMMENDS USING UV PROTECTANT SUITABLE FOR PVC MATERIALS.

CLEANING

Although normal wear and tear is unavoidable, proper cleaning will help increase the life of your inflatable. If your inflatable is used daily for several weeks, FunAir® recommends cleaning weekly. Rinsing all hardware (O-rings, D-rings, etc.) with fresh water weekly. Always clean and dry the product before it is packed away.

NEVER USE STRONG DETERGENT OR SILICONE-BASED PRODUCTS! NEVER USE A PRESSURE WASHER (OR ANY HIGH PRESSURE CLEANING EQUIPMENT) AS THIS WILL RESULT IN DAMAGE TO YOUR PRODUCT AND VOID THE FUNAIR® WARRANTY.

Main Body of Inflatable

- Clean the inflatable with mild soap, fresh water and soft towels.
- NEVER USE BRUSHES WITH STIFF BRISTLES OR HARSH CHEMICALS.
- Use of brushes with stiff bristles or harsh chemicals will void the warranty.

Removing Algae

Use a special cleaning agent. Follow the manufacturer's directions carefully.

Non-slip Surfaces

Use of a brush with plastic stiff bristles is allowed on this material only.

Valves

Check that the valves are clean and not damaged.

STORAGE

Always clean and completely dry your product after use and before storage to prevent mildew or mold. Store your product in a dry space that is rodent free. Do not roll the product extremely tight so damage does not occur to seams or valves. As shown in the pictures on this page, your product can be flaked into a compartment for storage.



REPAIRS

Normal use of inflatable products may result in small tears or punctures requiring repair. Small tears and punctures located on a seam will be more difficult to repair and may require professional assistance.

All inflatable products purchased from FunAir include an accessory kit that includes a PVC material for patches, valve and valve tool for PVC repairs. Please obtain some PVC vinyl cement glue (such as HH-66 vinyl cement) from your local marine store or Amazon.

MATERIALS REQUIRED FOR PVC PATCHES

- PVC glue
- Heat gun or hair dryer
- Metal, heavy-duty plastic squeegee
- Firm, hard surface for working with the inflatable

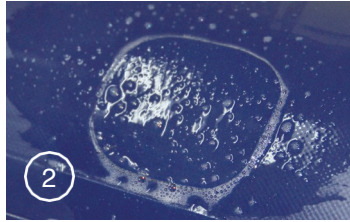
CONDITIONS REQUIRED FOR A SUCCESSFUL REPAIR

- Relative humidity less than 65%
- Temperature range between 62-77 degrees F (16-25 degrees C)
- No direct sunlight or rain

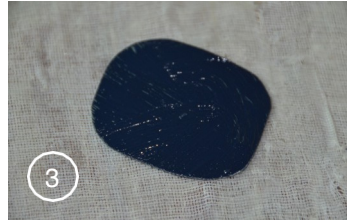
STEP-BY-STEP REPAIR INSTRUCTIONS



While product is inflated, LOCATE THE LEAK or tear area.



If puncture is not easy to see, USE THE SOAPY WATER TEST. Mix up a soapy solution of 3 parts water to 1 part soap and apply liberally to the area of the product that may be leaking. The leak will create small bubbles.



CUT A PATCH TO FIT THE AREA. Cut the patch at least 1" larger on all sides than appears required for repair. Cut rounded edges on patches to ensure optimal repair quality. Pointed edges tend to lift and are difficult to glue fully.



CLEAN THE AREA with a cloth that contains rubbing alcohol.



MARK THE AREA FOR REPAIR with a marker, crayon or wax pencil and then deflate the product.



BRUSH PVC GLUE WITHIN THE MARKED AREA ON INFLATABLE. Spread a consistent amount of glue over the patch area. Let dry completely.

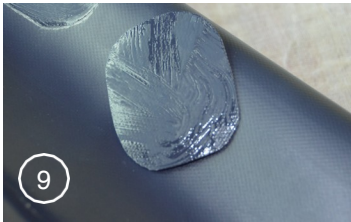


REPEAT STEP 6 on the back of the patch. Let dry completely. Wet Glue patches will not stick to another wet glued area.



ASSEMBLE THE HEAT GUN OR HAIR DRYER AND SQUEEGEE.

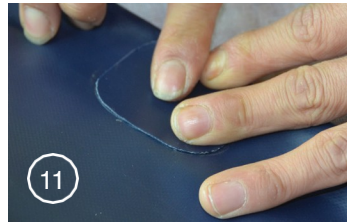
REPAIR INSTRUCTIONS (CONT.)



9
Once the glue on the patch and the area requiring repair on the inflatable are dried, the color will change to a matte finish.



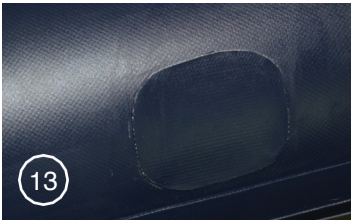
10
WARM THE GLUED AREAS WITH A HEAT GUN TO ACTIVATE THE GLUE. The glued area should be warm to the touch, but not hot.



11
PRESS THE PATCH EVENLY ONTO THE DAMAGED AREA. Make sure you are working on a smooth, hard surface underneath the inflatable.



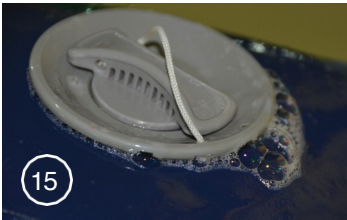
12
USE THE SQUEEGEE TO WORK OUT ALL AIR BUBBLES. Start from the center of the patch and smooth your way to the edges in all directions.



13
THE PATCH IS FINISHED. Wait 24 hours before inflating the product.



14
After 24 hours, inflate the product to INSPECT THE REPAIR. Brush the soapy solution over the repaired area to check for leaks. If bubbles appear near the repair, repeat the repair process with a larger patch.



15
CHECK FOR VALVE LEAKS. Rarely, an inflatable product has been rolled so tightly that it can cause the backing nut of the Inflation Valve or Pressure Relief Valve to become loose. In this case, place the soapy solution on the edges of the valve to check for leaks. Small bubbles indicate valve-tightening is required. Use valve-tightening tool included in the Accessory Kit to re-tighten valve.



16
TIGHTEN THE VALVE. Once inflatable is deflated, place valve-tightening tool (included with the inflatable) on top of valve stem and turn left to loosen. Use other hand to hold the nut in place while adjusting. Replace valve and re-tighten to right with tool.

TERMS AND CONDITIONS

Purchase and use of products from FunAir® are subject in their entirety to the Terms and Conditions located at [http:// funair.com/pages/no-fun-page](http://funair.com/pages/no-fun-page) (the “Agreement”). All information about the FunAir® Limited Warranty is included in the “Agreement”.

THE AGREEMENT INCLUDES TERMS THAT SUBSTANTIALLY AFFECT YOUR RIGHTS, INCLUDING LIMITATIONS ON FUNAIR’S LIABILITY, DISCLAIMERS OF WARRANTIES, AND AN OBLIGATION TO ATTRIBUTE ANY DISPUTES WITH FUNAIR IN TEXAS.

Custom items are non-returnable. If damaged happen and you feel it is warranty related, pictures need to be sent as soon as possible to determine if it’s covered under warranty or not. Please read more about warranty-related claims in the “Agreement.” By using a FunAir® product, you are agreeing to be bound by the terms and conditions of the “Agreement”.

